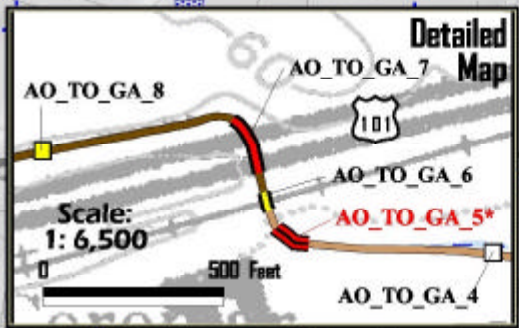
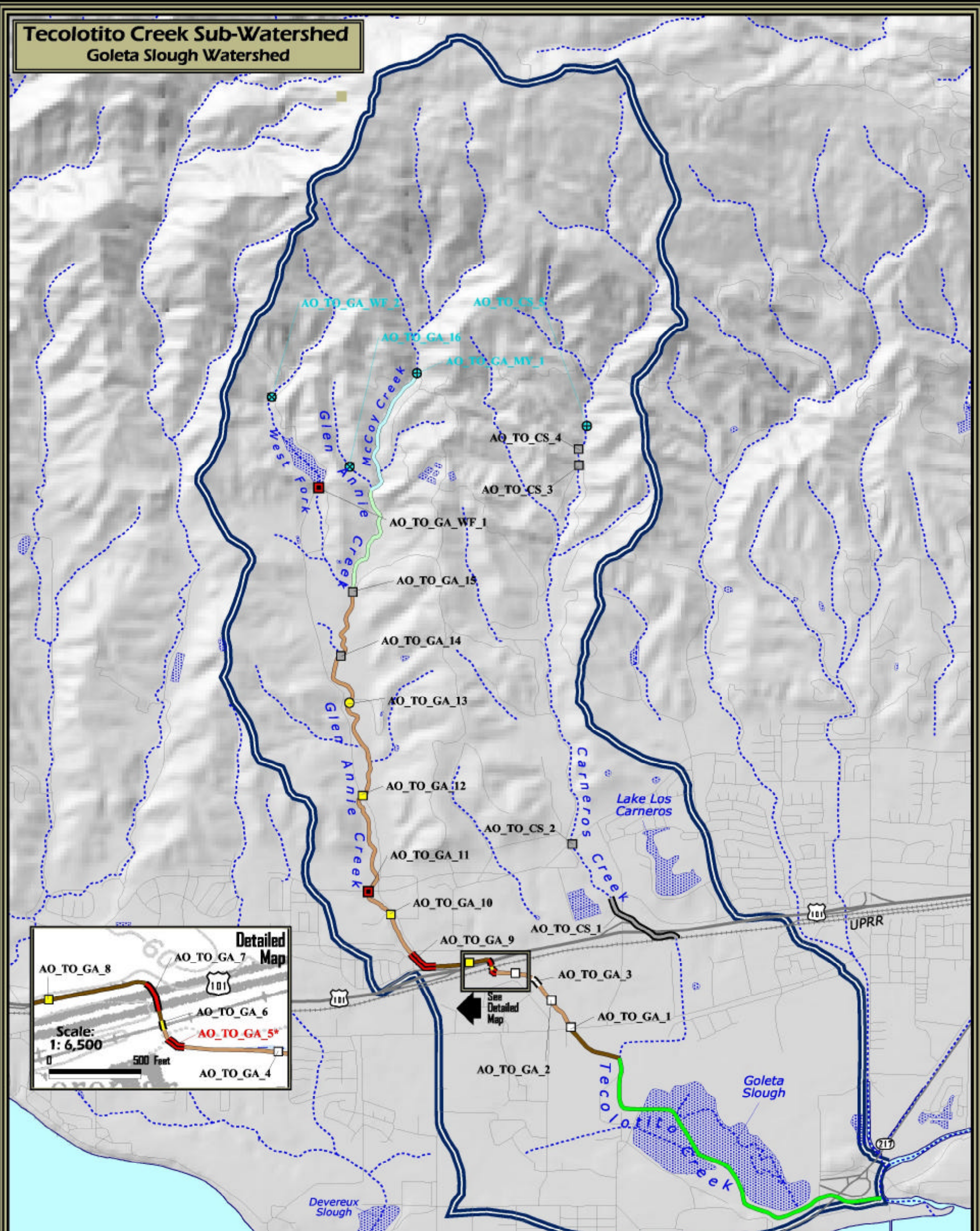


**Tecolotito Creek Sub-Watershed**  
Goleta Slough Watershed



**Legend**

Salmonid Habitat Quality:	Barrier Origin and Severity:		Other Features:
	Anthropogenic:	Natural:	Severity**:
0.00 - 0.25 (Extremely Low)			Undetermined
0.25 - 0.40 (Low)			0.2 - 0.5 (Low)
0.40 - 0.55 (Moderate)			0.6 - 0.7 (Moderate)
0.55 - 0.70 (Moderate - High)			0.8 (High)
0.70 - 0.85 (High)			0.9 (Extremely High to impassable)
0.85 - 1.00 (Extremely High)			1.0 (Impassable)
Slough or Lagoon			Estimated Natural Limit
Unsurveyed Habitat or Excluded Streams			Identified Natural Limit
	<b>BR_1 Keystone Barrier</b>		

\*\* See document for barrier description, assessment and recommendations. \*\*\* See document for detailed description of barrier severity.

