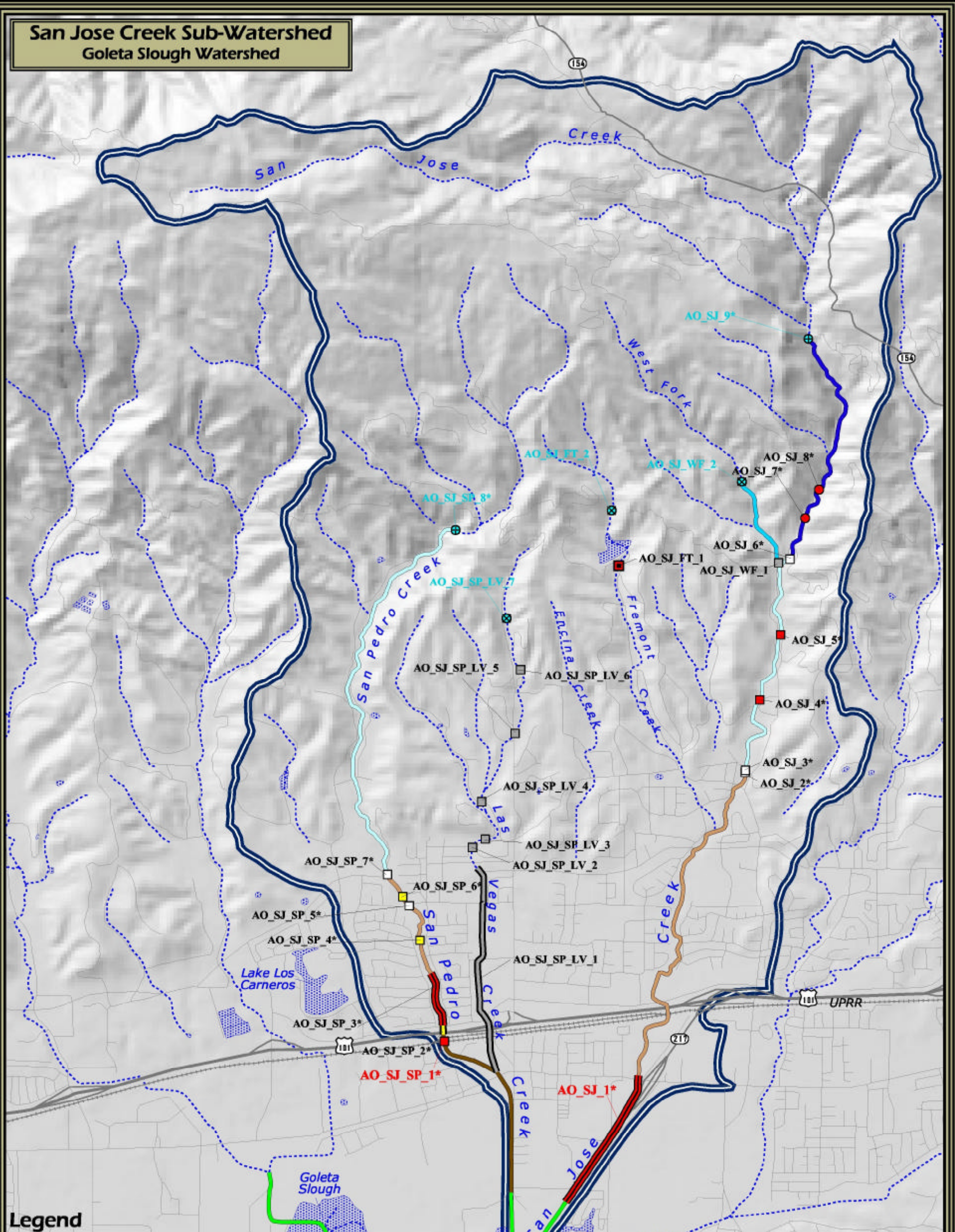


**San Jose Creek Sub-Watershed**  
Goleta Slough Watershed



**Legend**

Salmonid Habitat Quality:	Barrier Origin and Severity:			Other Features:
0.00 - 0.25 (Extremely Low)	Anthropogenic	Natural	Undetermined	Watershed Boundary
0.25 - 0.40 (Low)	Undetermined	0.2 - 0.5 (Low)	Water Bodies or Wetlands	Major Highways
0.40 - 0.55 (Moderate)	0.6 - 0.7 (Moderate)	0.6 - 0.7 (Moderate)	Minor Highways	Roads
0.55 - 0.70 (Moderate - High)	0.8 (High)	0.8 (High)	Union Pacific Railroad	Data Sources:
0.70 - 0.85 (High)	0.9 (Extremely High to Impassable)	0.9 (Extremely High to Impassable)	Estimated Natural Limit	US GEOLOGICAL SURVEY:
0.85 - 1.00 (Extremely High)	1.0 (Impassable)	1.0 (Impassable)	Identified Natural Limit	Digital Elevation Model
Slough or Lagoon	<b>BR_1</b> Keystone Barrier			Highways, Roads, Railroads
Unsurveyed Habitat or Excluded Streams	* See document for barrier description, assessment and recommendations.			CONCEPTION COAST PROJECT:
	** See document for detailed description of barrier severity.			Salmonid Habitat, Barriers, Watersheds, Streams, Water Bodies

