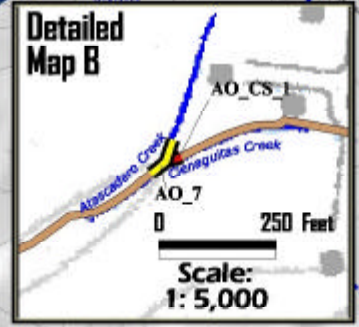
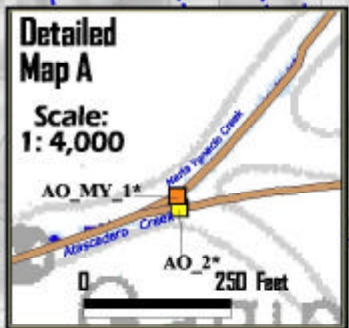
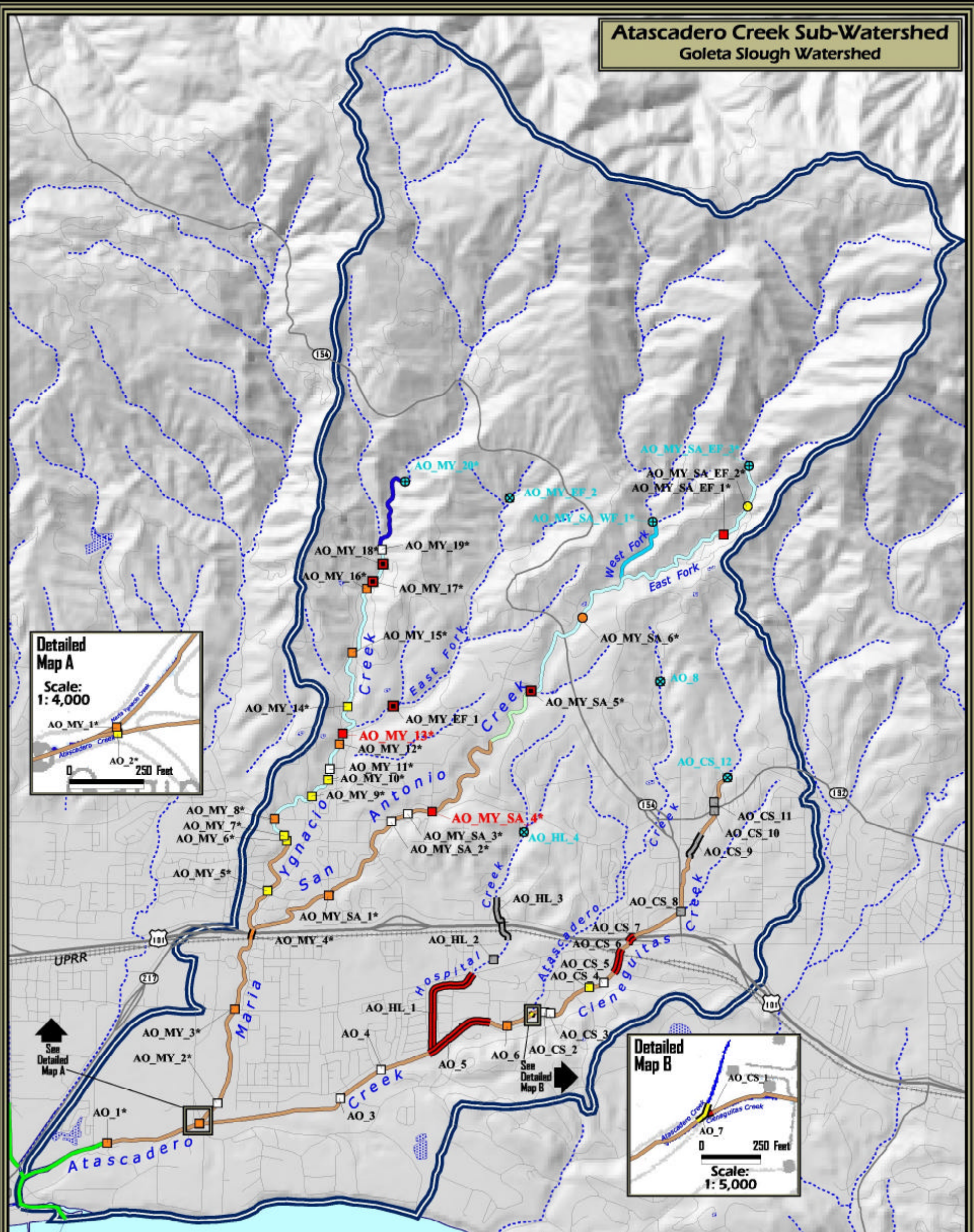


Atascadero Creek Sub-Watershed
Goleta Slough Watershed



Legend

Salmonid Habitat Quality:	Barrier Origin and Severity:			Other Features:
	Anthropogenic:	Natural:	Severity**:	
0.00 - 0.25 (Extremely Low)			Undetermined	Watershed Boundary
0.25 - 0.40 (Low)			0.2 - 0.5 (Low)	Water Bodies or Wetlands
0.40 - 0.55 (Moderate)			0.6 - 0.7 (Moderate)	Major Highways
0.55 - 0.70 (Moderate - High)			0.8 (High)	Minor Highways
0.70 - 0.85 (High)			0.9 (Extremely High to Impassable)	Roads
0.85 - 1.00 (Extremely High)			1.0 (Impassable)	Union Pacific Railroad
Slough or Lagoon			1.0 (Impassable)	Data Sources:
Unsurveyed Habitat or Excluded Streams			Estimated Natural Limit	US GEOLOGICAL SURVEY: Digital Elevation Model, Highways, Roads, Railroads
			Identified Natural Limit	CONCEPTION COAST PROJECT: Salmonid Habitat, Barriers, Watersheds, Streams, Water Bodies

BR 1 Keystone Barrier
* See document for barrier description, assessment and recommendations. ** See document for detailed description of barrier severity.

